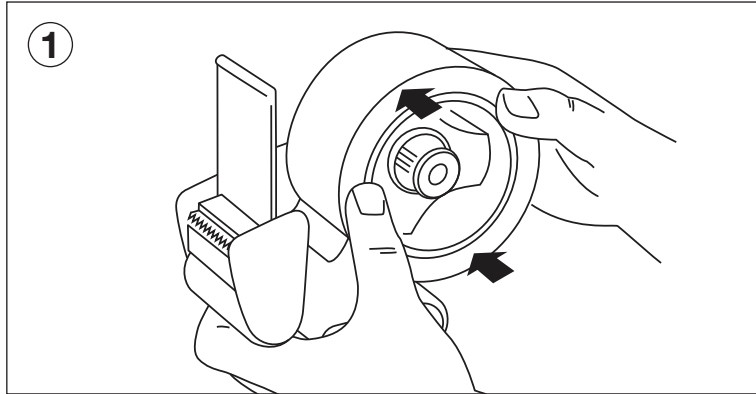


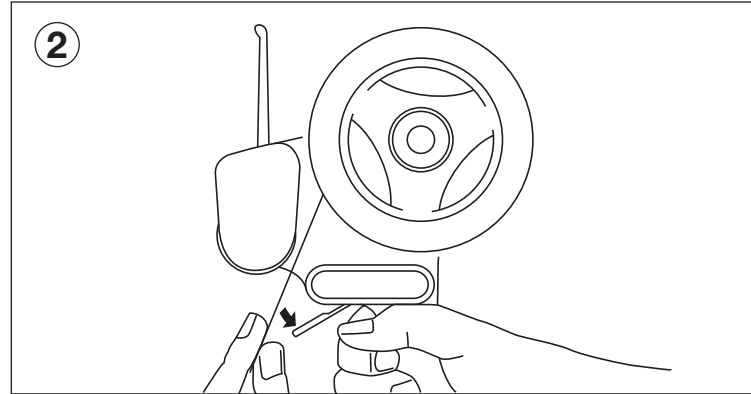
How to load the Rapesco Packaging Tape Dispenser

The Rapesco 960 packaging tape dispenser is a simple and effective method for applying packaging tape to cartons and boxes. Using and reloading the tape dispenser can be quick and easy by simply following the steps below.

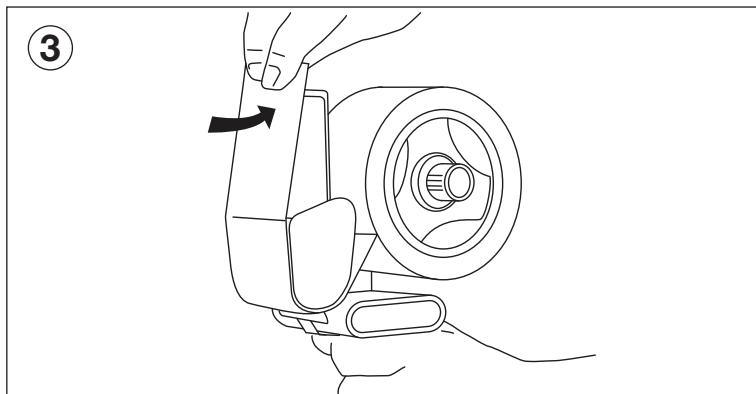
Loading Instructions:



Insert the roll of packing tape onto the large dispenser wheel on the top-right of the tape dispenser with its handle grip to the right. Position the tape roll so that it will unwind with the sticky side facing down as the dispenser is pulled backwards.

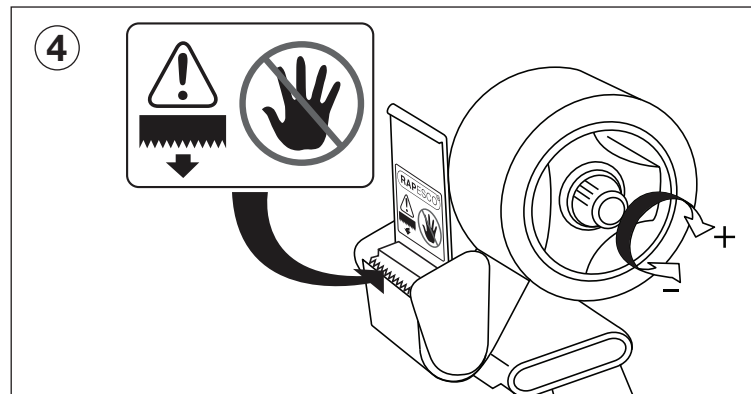


Pull the front end of the tape roll through the slot between the dispenser roller and metal guide. The guide can be held open by pressing down on the extended metal tab. The sticky side of the tape should face down/ away from the edge of the blade. If you have the tape in the wrong way, the tape will stick to the dispenser roller, so make sure the sticky side is face down.



Pull up on the tape so the tape is over the cutting bar/ serrated blade, being careful not to cut yourself on the sharp blade.


To test the dispenser, pull a small amount of tape out and cut the tape with the serrated blade or by pressing it against a box and pulling back to make sure the tape unwinds and adheres correctly.




Adjust the tension on the dispenser (in the centre of the large dispenser wheel) to set a smooth and comfortable unwind mechanism.

Your tape dispenser is now ready to use.

Tips & Warnings:

 When taping, use the plastic shield on the top of the dispenser (above the blade) to press the tape to the package as you pull the tape off the roll. Continue pressing and pulling while you apply pressure on the tape. When you have finished push down and give the dispenser a quick twist to cut the tape.

 Be extremely careful of the sharp cutting blade.

Keep out of reach from children.